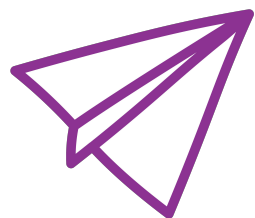


Draw a picture of  
your favourite place.  
What makes it special?



Thank you for  
your drawing!





## Commissioner's Early Years Postcards

## Instructions for Child Care Centres and Pre-Schools

**Thank you for supporting your pre-schoolers to participate in the Commissioner's Early Years Postcards initiative.**

The initiative is designed to engage pre-school and kindergarten aged children in a simple activity that exposes them to what it means to have a voice and be heard.

This annual initiative prepares pre-schoolers for later opportunities they will have, when the Commissioner invites their participation in her annual Student Postcard initiative for school students in Years 2 to 6.

Please print as many copies of the artwork on the page above as you will need for the group of pre-schoolers you will be supporting to complete this engagement activity.

Please explain to your pre-schoolers, in your own words, that ***there is a Commissioner for Children and Young People in South Australia who is there to listen to children of all ages. South Australian children can tell their Commissioner what they would like her to know about their lives, including what they think would make them better.***

***The name of the current Children's Commissioner is Helen (Connolly). Helen would like to know what your favourite place is, and why you chose it? She would like you to draw a picture of this place and include anyone or anything in it that makes it special to you.***

Once your pre-schoolers have completed their drawing, please scan and email their finished artwork by **Friday 7 July, 2023** to:  
**[commissionerspostcards@sa.gov.au](mailto:commissionerspostcards@sa.gov.au)**

Please complete the activity during School Term 2, 2023. The Commissioner and her team will review and analyse the responses and provide a summary of conclusions in due course.

Thank you for your support. Please don't hesitate to get in touch via email or phone us on 08 8226 3355 during business hours with any queries you may have.